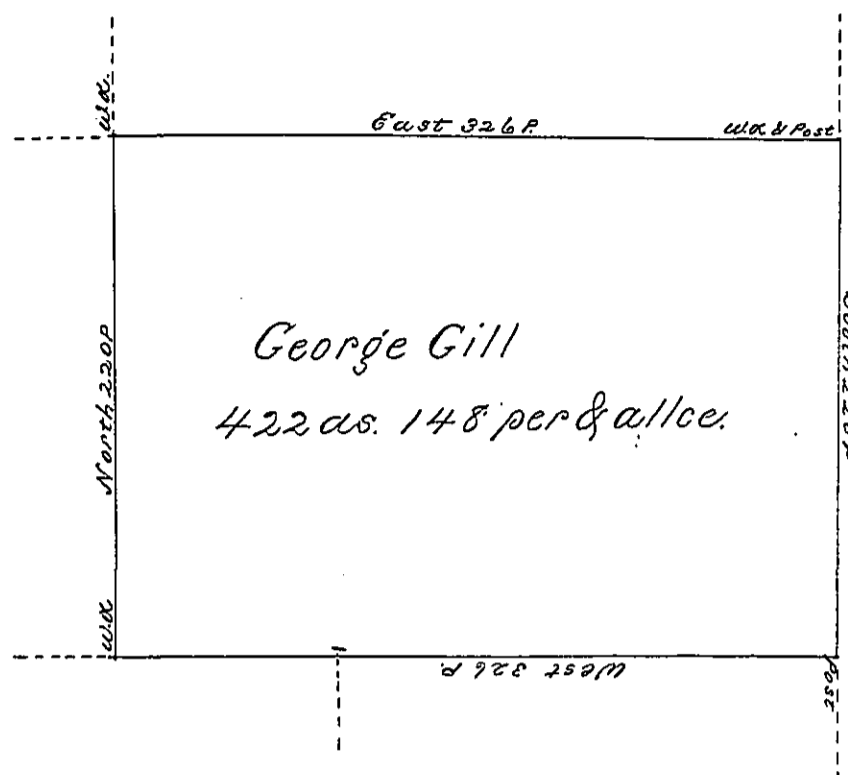


Peter Gill

Benj. Gill



Henry Gill

Hugh Gill

Situate on the West Side of French Creek
 in Allegheny County containing 422 ac. and 148
 perches and allowance of Six Percent for Roads
 &c. Surveyed the 20th. day of June 1795 In pursu-
 ance of a Warrant dated the 10th. day of April
 1793.

Wm. Power Esq. Sr.

To David Brodhead Esquire }
 Surveyor General }

IN TESTIMONY that the above is a copy of the original remaining on file in
 the Department of Internal Affairs of Pennsylvania, made
 conformably to an Act of Assembly approved the 16th day of
 February, 1833, I have hereunto set my Hand and caused
 the Seal of said Department to be affixed at Harrisburg,
 this third day of October 1899

James W. Fulton
 Secretary of Internal Affairs.